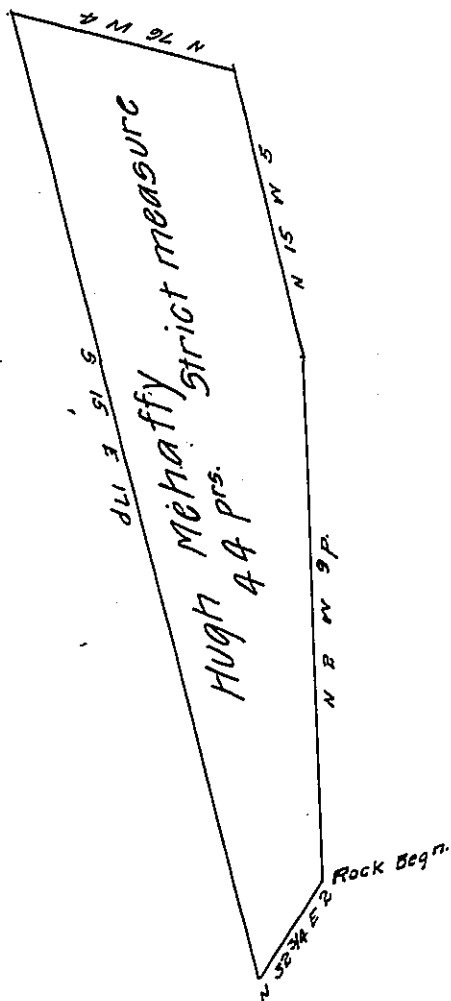


Birch Island



Lancaster County Shore

Draught of "Centre Island", Situate in the River Susquehanna,
 in Conestogoe township Lancaster County, lying about twenty yards
 below Birch Island containing forty four perches strict measure
 Surveyed in pursuance of a warrant, granted to Hugh McHaffy,
 Dated the 7th day of November A.D. 1820.

P. James Black D.S

To Jacob Spangler Esqr.
 Surveyor Genl.

IN TESTIMONY that the above is a copy of the original remaining on file in
 the Department of Internal Affairs of Pennsylvania, made
 conformably to an Act of Assembly approved the 16th day of
 February, 1833, I have hereunto set my Hand and caused
 the Seal of said Department to be affixed at Harrisburg,
 this thirtieth day of November 1907.

Alamy Huck
 Secretary of Internal Affairs.